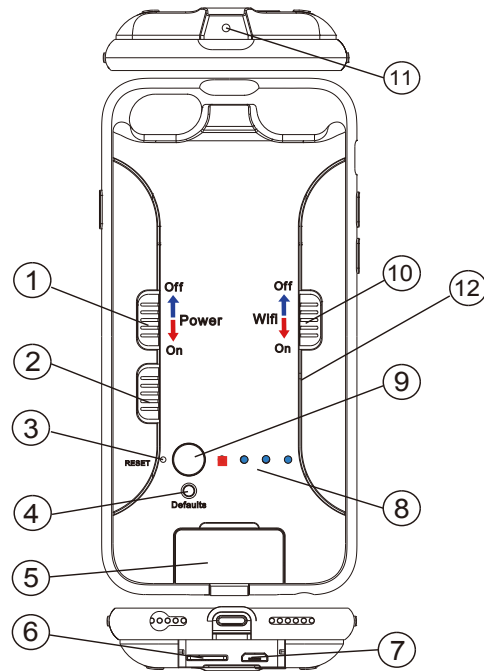


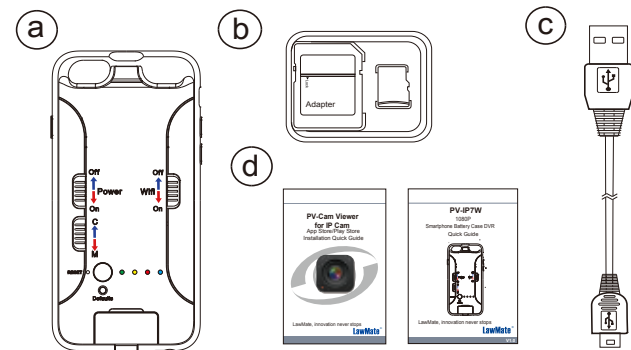
1. Name and Parts



1. Power On (Red Arrow) / Off (Blue Arrow)
2. Zoom in/out Switch (4X)
3. Reset Key
4. Default Button
5. Cover
6. Memory Card Slot
7. USB Port
8. LED Indicators
9. LED Display On/Off Button / Format Button
10. Wi-Fi On (red arrow) / Off (blue arrow)
11. Lens
12. Microphone

1

2. Package Content



- a. Smart phone case c. USB cable
b. Memory card d. User's manual

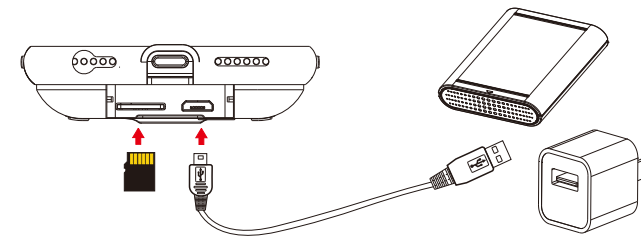
3. LED Indicators

- Solid Blue LED ■ - Power On
Solid Red LED ■ - Recording On
Solid Orange LED ■ - Wi-Fi Connected
Blinking Orange LED ■ - Searching Wi-Fi
Blinking Blue LED ■ - Charging
Three Blue LEDs All On ■ - Fully Charged

*Warranty will be void if the serial number sticker is tampered.
*Microphone is not available for USA market.

2

4. Charge the Battery



Connect the micro USB end of the cable to ⑦ and connect the other end to an USB power source, or plug it to a power bank of your own choice. The power bank then works as an extra battery. When charging is complete, the three blue LEDs will all be on.

5. Format Memory Card

Press & hold the format button then slide down the power switch (turn on power). When red LED starts blinking, release the format button. Format is completed when red LED goes off.

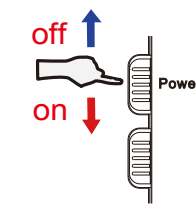
Note: It is important to format the card when using it for the first time.

6. Date and Time Setting

Please refer to the **Synchronize the Time** steps on the PV Cam Viewer for IP Cam quick guide.

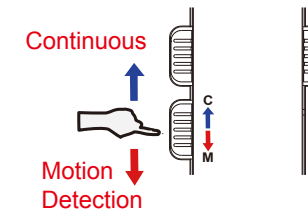
3

7. Operation

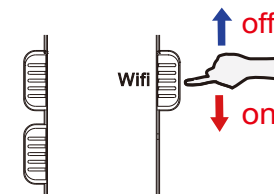


7.1 Power on/off
Press ⑨ to display the LED indicators first. And, slide down ① to power on the device.

- Red LED is steadily on - device is recording.



7.2 Recording Mode
While recording, slide down ② to change the recording mode to Motion Detection. Or slide up to change it to Continuous recording.



7.3 Turn on/off Wi-Fi
With device powered on, slide down ⑩ to turn on Wi-Fi function. For more information about WiFi connection setup, please refer to PV Cam Viewer quick guide

4

7.4 Turn on/off LED Indicators

Press ⑨ once to turn on and off the LED indicators.

7.5 Reset the Device

If your device functions abnormally, please reset it by pressing ③ while the power is on. When the red LED goes off, the reset is completed.

7.6 Restore the Default Wi-Fi Password

If you forget your new password, press ④ for 4 secs. The password (88888888) will be restored to default setting.

7.7 Restore to All Factory Settings

If you want to restore the device to the default setting, press ④ for 10 seconds and release. When device powers off and powers on itself, and orange LED starts blinking, default setting is restored.

8. Retrieve Video Files

- Video and photo files are stored in the memory card.
- There are two ways to download video/photo files.
- Using the memory card reader to download video/photo files.
- With the device powered on and memory card inserted, connect the device to PC by USB connection. It will be recognized by PC as an external drive for user to download the video recordings and photo files.

5

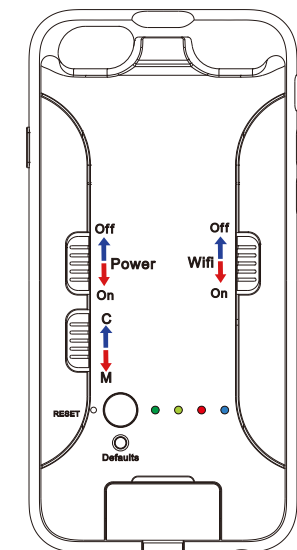
10. Specification

Built-in Camera Module	
Built-in image sensor	1/3" progressive CMOS sensor
Sensor resolution	2592x1944
Sensor sensitivity	3.3 Lux @ F 2.0
Lens F/No.	F 3.2
Focal Length	4mm
Angle of View	66°
Video Spec.	
Algorithm	H.264, JPEG
File Format	MOV, JPG
Video recording mode	Manual
Recording Capability	1920x1080
Frame rate	Up to 30 fps
Digital Zoom	4X
WiFi Spec.	
WiFi	Built-in WiFi Module(IEEE 802.11b/g/n)
WiFi Protocol	RTSP
Storage & I/O	
Memory type	Micro SD Card (Support SDHC max=32GB)
Data interface	Mini USB 2.0
Misc.	
Date/Time Table	YYYY/MM/DD, HH:MM:SS
Snapshot	recording and playback video
Power	
Power Input	DC 5V
Power Consumption	380-420mA(WiFi OFF)(WiFi ON+80mA)
Charging Time	240 min(400mA)
Battery Input	DC 3.7V / 1200 mA high polymers battery(XK704041)
Battery Lifetime	1080P Continue recording 170min(WiFi OFF+LED OFF) 1080P Continue recording 150min(WiFi OFF+LED ON) 1080P Continue recording 130min(WiFi ON+LED OFF) 1080P Continue recording 110min(WiFi ON+LED ON) 720P Continue recording 185min(WiFi OFF+LED OFF) 720P Continue recording 165min(WiFi OFF+LED ON) 720P Continue recording 145min(WiFi ON+LED OFF) 720P Continue recording 125min(WiFi ON+LED ON) WVGA Continue recording 200min(WiFi OFF+LED OFF) WVGA Continue recording 180min(WiFi OFF+LED ON) WVGA Continue recording 160min(WiFi ON+LED OFF) WVGA Continue recording 140min(WiFi ON+LED ON)
Recording time	160min @ 1920x1080 resolution (16GB SD card)
Physical	
Vibration Alert	Power on/off, Recording, Low battery
Dimension	70x140x15 mm
Weight	74g

6

PV-IP7W

1080p Smartphone Case Wi-Fi DVR
Quick Guide



LawMate, innovation never stops

LawMate®

V1.0